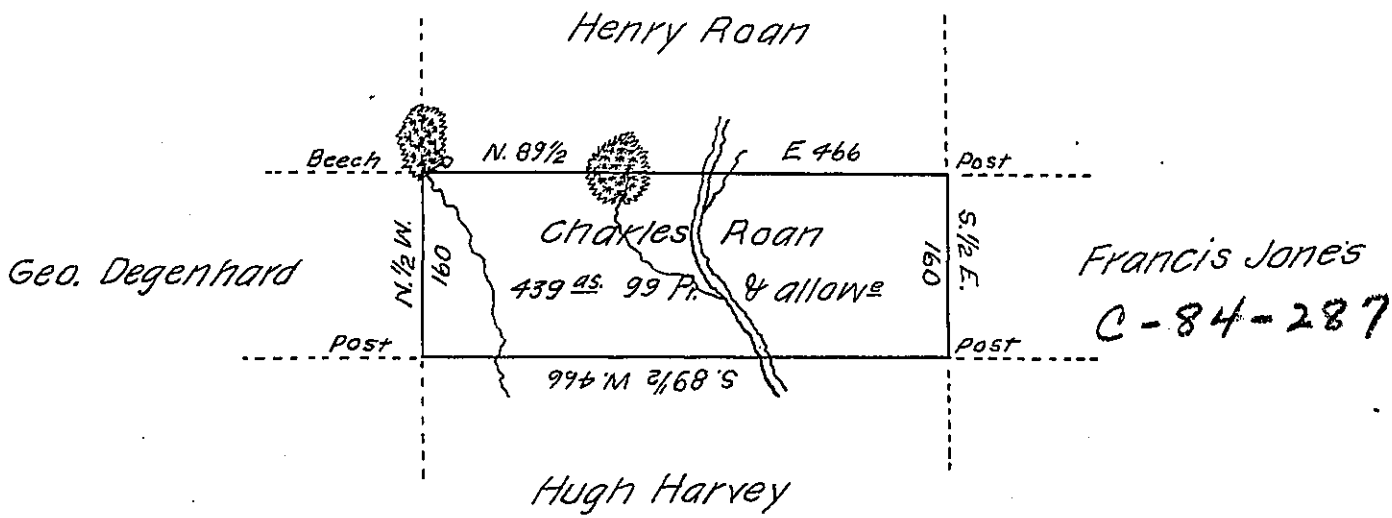


Page-79



A Draught of a tract of land called—— Situate in the
 County of Luzerne, adjoining Hugh Harvey & others, surveyed the 29th
 day of Octo^r 1792 for Charles Roan in pursuance of a warrant bearing
 date the 3^d day of April 1792 Containing Four hundred thirty-nine Acres
 & ninety-nine perches & the allowance of Six & Cent &c.

To

Ant^y Crothers, D. S.

Dan^l Brodhead, Esq^r

Surveyor General }

IN TESTIMONY that the above is a copy of the original remaining on file in
 the Department of Internal Affairs of Pennsylvania, made
 conformably to an Act of Assembly approved the 16th day of
 February 1833, I have hereunto set my hand and caused
 the Seal of said Department to be affixed at Harrisburg,
 this eighteenth day of July 1907.

Henry Houck,
 Secretary of Internal Affairs.